

# LA ISLA

*villa's*



İskele, Ötüken çemberi

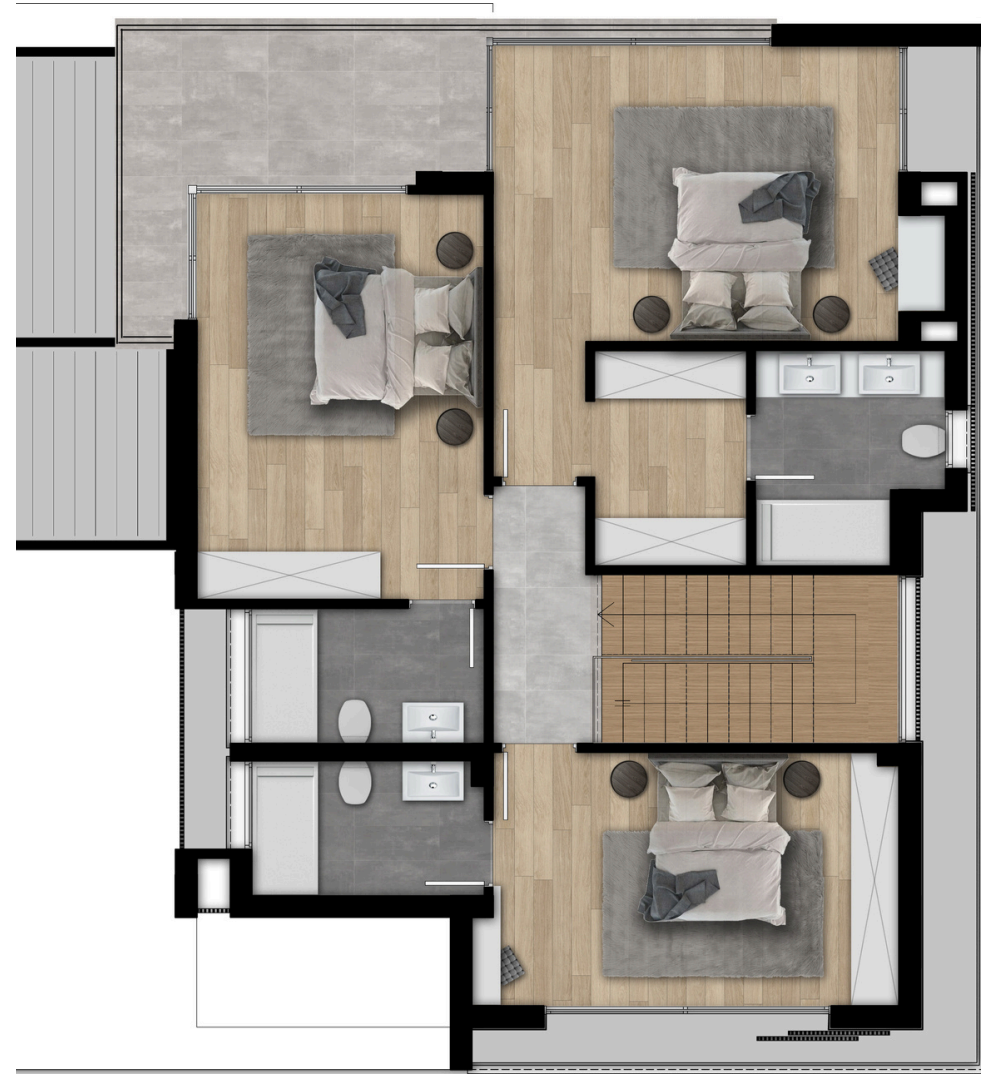
Dış görüntü



+90 533 850 8539 Özgün  
+90 533 882 2502 İris

Levant Cyprus  
GAYRİMENKUL

LevantCyprus.com



# İskele, Ötüken çemberi

# Site olanakları

TURKISH BATH & STEAM ROOM



SPA



OUTDOOR POOL



MARKET



GYM & FITNESS

DOG PARK



RESTAURANT & CAFE



BASKETBALL COURT



TENNIS COURT



BOTANIC GARDEN



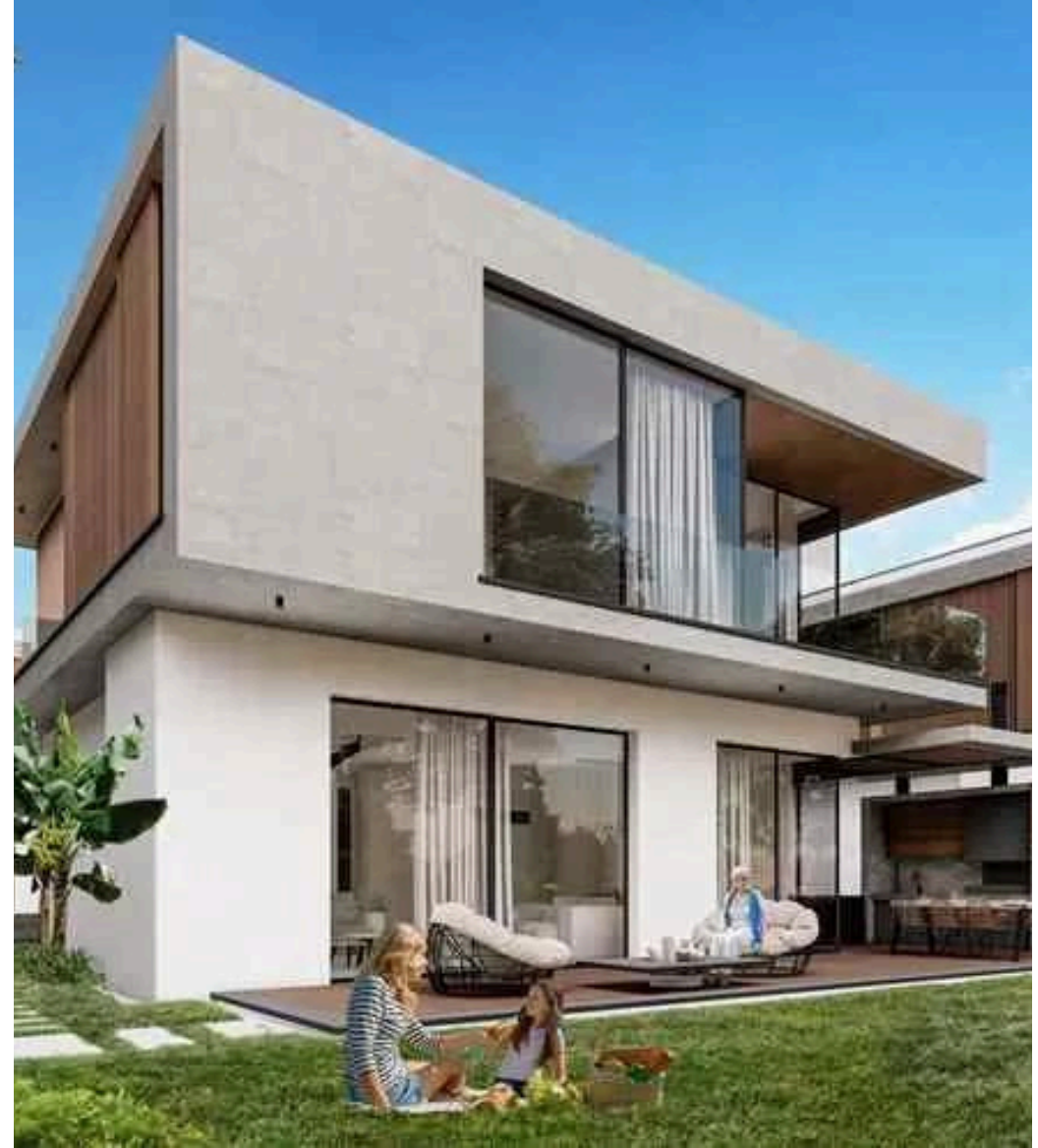
+90 533 850 8539 Özgün  
+90 533 882 2502 İris

Levant Cyprus  
GAYRİMENKUL

LevantCyprus.com

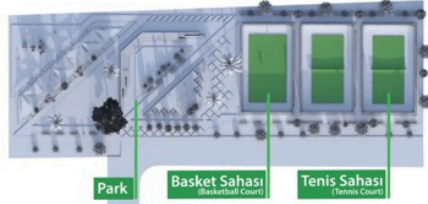
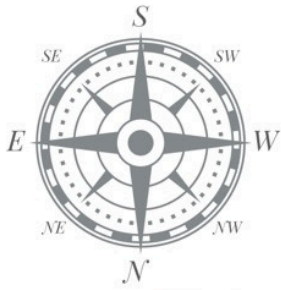
<b>Fiyat</b>	<b>£275,000</b>
<b>Peşinat %73</b>	<b>£200,000</b>
<b>Taksit %27</b>	<b>£75,000</b>
<b>Arsa alanı</b>	<b>420 m2</b>
<b>Kapalı alan</b>	<b>176 m2</b>
<b>Teras</b>	<b>28 m2</b>
<b>KDV teslimde</b>	<b>%5</b>
<b>Trafo katkı payı</b>	<b>£3,000</b>

**Teslim: Mayıs 2025**



# İskele, Ötüken çemberi

# Vaziyet Planı



+90 533 850 8539 Özgün  
+90 533 882 2502 İris

Levant Cyprus  
GAYRİMENKUL

LevantCyprus.com